
GARDNER DENVER®

301CMB997 Rev D
MAR 2010

WELL SERVICING PUMP

MODEL

C-2250

D-2250

HD-2250

GD-2250T

TRIPLEX PUMPS

YWS FLUID END PARTS LIST

Gardner
Denver

ECN 1050954

MAINTAIN PUMP RELIABILITY AND PERFORMANCE WITH GENUINE GARDNER DENVER PARTS AND SUPPORT SERVICES

Gardner Denver® genuine pump parts, manufactured to design tolerances, are developed for optimum dependability. Design and material innovations are the result of years of experience with hundreds of different pump applications. Reliability in materials and quality assurance are incorporated in our genuine replacement parts.

Gardner Denver supports your needs with these services:

1. Trained parts specialists to assist you in selecting the correct replacement parts.
2. Repair and maintenance kits designed with the necessary parts to simplify servicing your pump.

Authorized service technicians are factory trained and skilled in pump maintenance and repair. They are ready to respond and assist you by providing fast, expert maintenance and repair services.

For the location of your local authorized Gardner Denver distributor refer to the yellow pages of your directory or contact:

**Factory
(Tulsa):**

Gardner Denver Well Servicing Pumps
4747 South 83rd East Avenue
Tulsa, Oklahoma 74145

Phone: (918) 664-1151
(800) 637-8099

Fax: (918) 664-6225

**Service Center
(Odessa):**

Chaparral
2121 West 44th Street
Odessa, Texas 79764

Phone: (432) 366-5433
(800) 368-1134

Fax: (432) 363-9940

**Service Center
(Ft.Worth):**

Geoquip
7533 Kathy Lane
Ft. Worth, Texas 76126

Phone: (817) 249
(800) 824-0271

Fax: (817) 249-6401

INSTRUCTION FOR ORDERING REPAIR PARTS

When ordering parts, specify Pump MODEL and SERIAL NUMBER (see nameplate on unit). The Serial Number is also stamped on top of the cylinder end of the frame (cradle area).

Where NOT specified, quantity for parts required per pump unit is one (1); where more than one is required per unit, quantity is indicated in parenthesis.

SPECIFY THE NUMBER OF PARTS REQUIRED.

DO NOT ORDER BY SETS OR GROUPS.

To determine the Right Hand and Left Hand side of a pump, stand at the power end and look toward the fluid end. Right Hand and Left Hand are indicated in parenthesis following the part name, i.e. (RH) & (LH), when appropriate

GARDNER DENVER PRODUCT WARRANTY

GENERAL PROVISIONS AND LIMITATIONS

Gardner Denver (the "Company") warrants to each original retail purchaser ("Purchaser") of its new products, assemblies or parts from the Company or its authorized distributors that such products are, at the time of delivery to the Purchaser, made with good material and workmanship. No warranty is made with respect to:

1. Any product which has been repaired or altered in such a way, in the Company's judgment, as to affect the product adversely.
2. Any product which has, in the Company's judgment, been subject to negligence, accident, or improper storage, improper installation, operation or application. (Examples: over-pressure, sand-outs, cavitation, corrosion, erosion or degradation).
3. Any product which has not been operated or maintained in accordance with the recommendations of the Company.
4. Components or accessories manufactured, warranted and serviced by others.
5. Any reconditioned or prior owned product.

Claims for items described in (4) above should be submitted directly to the manufacturer.

WARRANTY PERIOD

The Company's obligation under this warranty is limited to repairing or, at its option, replacing, during normal business hours at an authorized service facility of the Company, any part or assembly which in the Company's judgment proved to have unsatisfactory material or workmanship within the applicable Warranty Period as follows.

Except for the products or components listed below, and subject to the limitations and restrictions set forth in the "Disclaimer" section set forth below, the Warranty Period for all products is 1,250 hours of operation or three (3) months after start-up, not to exceed 120 days after delivery to Purchaser, whichever occurs first. The exceptions are as follows:

1. Power end is warranted for twelve (12) months from date of start-up or eighteen (18) months from date of delivery to the Purchaser, whichever occurs first.
2. Forged steel fluid cylinders are warranted for materials and workmanship for 6 months

from the date of installation or 18 months from the date of delivery to the purchaser, whichever occurs first.

3. Repairs are warranted for 90 days from the date of delivery, for the workmanship and materials of the new parts installed.
4. Weld repaired fluid ends and weld repaired components are not warranted.
5. Expendable fluid end parts, including, but not limited to, valves, valve parts, packing, liners and pistons, are not covered by this warranty due to variable abrasive nature of material pumped.

PRESERVATION ASSEMBLIES DESTINED FOR STORAGE

In order for warranty acceptance any pump assembly not immediately installed or destined to be in storage or in transit for extended periods of time must be prepared for storage as defined in the Company's Long Term Storage Procedure. This includes but is not limited to:

- Drain and thoroughly clean inside power end crankcase.
- Spray rust inhibiting oil on all bearing, machined and inside surfaces of the power end.
- Induce clean gear oil into any circulating pump, filter, heat exchanger and piping.
- Remove valves, seats and plungers from the fluid end. Thoroughly clean and dry these parts and all internal surfaces. Coat all cylinder bores, valve covers and reusable expendable parts with rust preventative.
- Flush all water, and contaminants from pump, tanks, hoses and spray nozzles. Spray all components with a rust inhibiting oil.
- Rotate pump every 30 days to insure bearings are oiled.
- At the expense of the Purchaser, any product properly preserved must be inspected by an authorized agent of the Company, prior to the Company, granting any extended warranty beyond that stated in this warranty.

LABOR TRANSPORTATION AND INSPECTION

The Company will provide labor, by Company representative or authorized service personnel, for repair or replacement of any product or part thereof

which in the Company's judgment is proved not to be as warranted. Labor shall be limited to the amount specified in the Company's labor rate schedule. Labor costs in excess of the Company rate schedules caused by, but not limited to, location or inaccessibility of the equipment, or labor provided by unauthorized service personnel is not provided for by this warranty.

All costs of transportation of product or parts claimed not to be as warranted and, of repaired or replacement parts to or from such service facility shall be borne by the Purchaser. The Company may require the return of any part claimed not to be as warranted to one of its facilities as designated by the Company, transportation prepaid by the Purchaser, to establish a claim under this warranty.

Replacement parts provided under the terms of this warranty are warranted for the remainder of the Warranty Period of the product upon which installed to the same extent as if such parts were original components.

The Company may request a root cause analysis be performed in-order to identify if a request for warranty claim meets the requirements of this warranty.

DISCLAIMER

Except as to title, the foregoing warranty is the sole and exclusive warranty of the Company. The Company hereby extends other manufactures' warranty or guaranties, if any given to Company by such manufacturer, but only to the extent the Company is able to enforce such warranty or guaranties. The Company has not authorized any party to make any representation or warranty other than as expressly set forth herein. SELLER HEREBY DISCLAIMS AND EXCLUDES ANY OTHER EXPRESS, IMPLIED OR STATUTORY WARRANTIES, ARISING BY OPERATION OF LAW OR OTHERWISE, INCLUDING, WITHOUT LIMITATION, ANY WARRANTIES OF MERCHANTABILITY OR FITNESS FOR A PARTICULAR PURPOSE. COMPANY MAKES NO WARRANTIES OR REPRESENTATIONS OF ANY KIND WHATSOEVER (EXPRESS, IMPLIED OR STATUTORY), OF LAW OR OTHERWISE, ON ANY EQUIPMENT, COMPONENT PARTS OR ACCESSORIES SOLD HEREUNDER WHICH, ARE NOT MANUFACTURED BY COMPANY.

NOTWITHSTANDING ANYTHING HEREIN TO THE CONTRARY, THE FOREGOING WARRANTY SHALL BE THE SOLE AND EXCLUSIVE REMEDY AVAILABLE TO THE PURCHASER. UNDER NO CIRCUMSTANCES, WHETHER IN CONTRACT, TORT OR OTHERWISE, SHALL THE COMPANY'S

TOTAL LIABILITY ARISING IN CONNECTION WITH ANY PURCHASE ORDER EXCEED THE AMOUNT OF ANY SALES OR OTHER PROCEEDS RECEIVED PURSUANT THERETO. IN ADDITION, UNDER NO CIRCUMSTANCES, WHETHER IN CONTRACT, TORT OR OTHERWISE, SHALL THE COMPANY BE LIABLE FOR LIQUIDATED, SPECIAL, INDIRECT, INCIDENTAL, EXEMPLARY, OR CONSEQUENTIAL DAMAGES, EXPENSES OR COSTS, INCLUDING, WITHOUT LIMITATION, LOST PROFITS OR FACILITY DOWNTIME, HOWEVER CAUSED AND EVEN IF THE POTENTIAL OF SUCH DAMAGES WAS DISCLOSED AND/OR KNOWN.

No statement, representation, agreement, or understanding, oral or written, made by any agent, distributor, representative, or employee of the Company which is not contained in this Warranty will be binding upon the Company unless made in writing and executed by an officer of the Company.

This warranty shall not be effective as to any claim which is not presented within 30 days after the date upon which the product is claimed not to have been as warranted. Any action for breach of this warranty must be commenced within one year after the date upon which the cause of action occurred.

Any adjustment made pursuant to this warranty shall not be construed as an admission by the Company that any product was not as warranted.

WARRANTY REQUESTS

Products to be returned for warranty analysis shall be approved for return in writing by the Company prior to shipment. All requests for product return shall be submitted by email. Facsimile or letter to:

Warranty Department c/o
Gardner Denver Petroleum Pumps
4747 South 83rd East Avenue
Tulsa, Oklahoma 74145

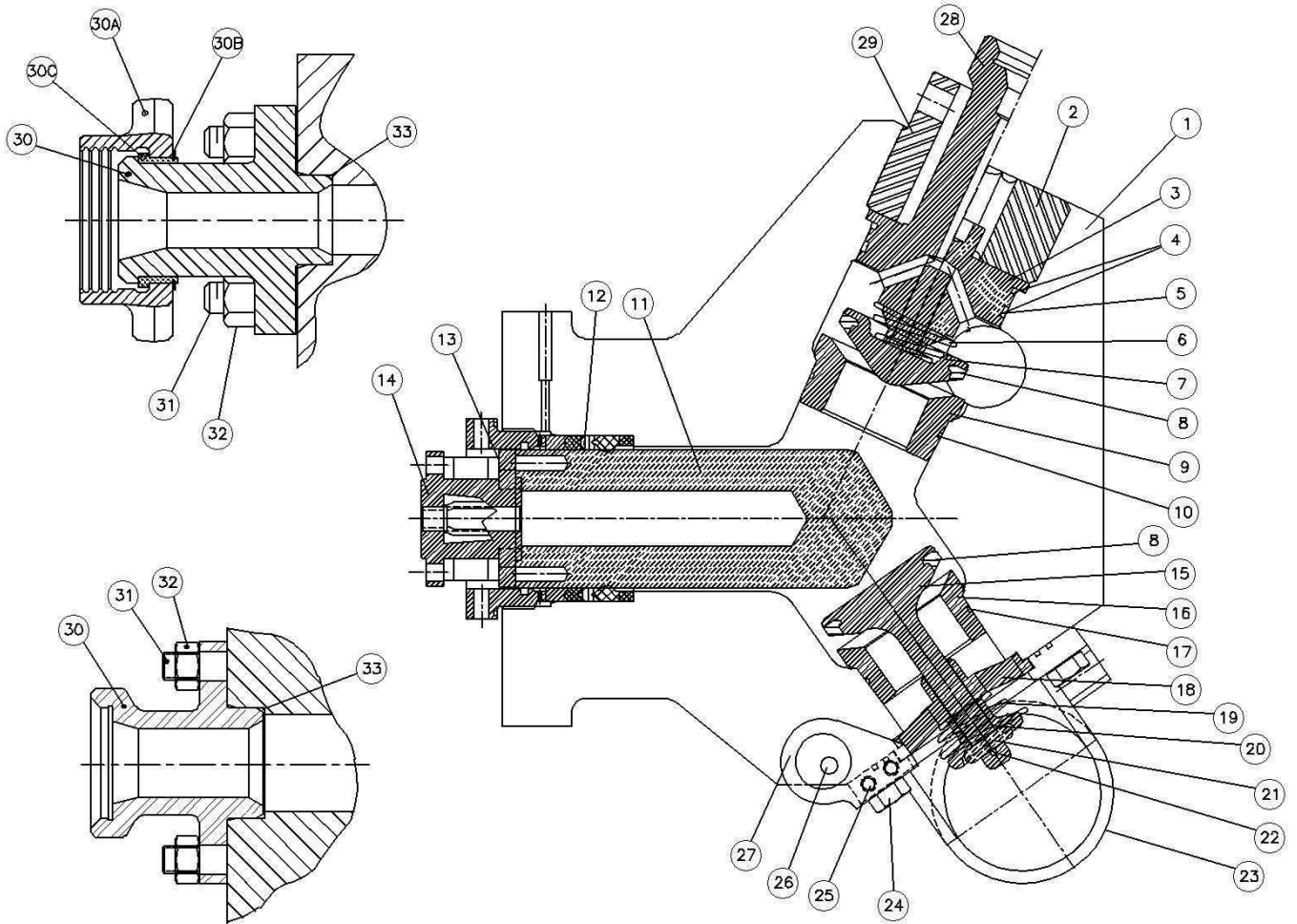
Email: CCR.QAR@gardnerdenver.com
Facsimile: (918) 664-6225

TABLE OF CONTENTS

MAINTAIN PUMP RELIABILITY AND PERFORMANCE	i
GARDNER DENVER PRODUCT WARRANTY	ii
4.0" YWS FLUID CYLINDER ASSEMBLY	1
4.5" YWS FLUID CYLINDER ASSEMBLY	3
5.0" YWS FLUID CYLINDER ASSEMBLY	5
5.5" YWS FLUID CYLINDER ASSEMBLY	7
6.0" YWS FLUID CYLINDER ASSEMBLY	9
6.5" YWS FLUID CYLINDER ASSEMBLY	11
6.75" YWS FLUID CYLINDER ASSEMBLY	13
RSL PACKING ASSEMBLY FOR YWS CYLINDER.....	15
YWS FLUID END SERVICE TOOLS	18

4.0" YWS FLUID CYLINDER ASSEMBLY

Order by Part Number and Description. Reference Numbers are for your convenience only.



305CMB810
(Ref Drawing)

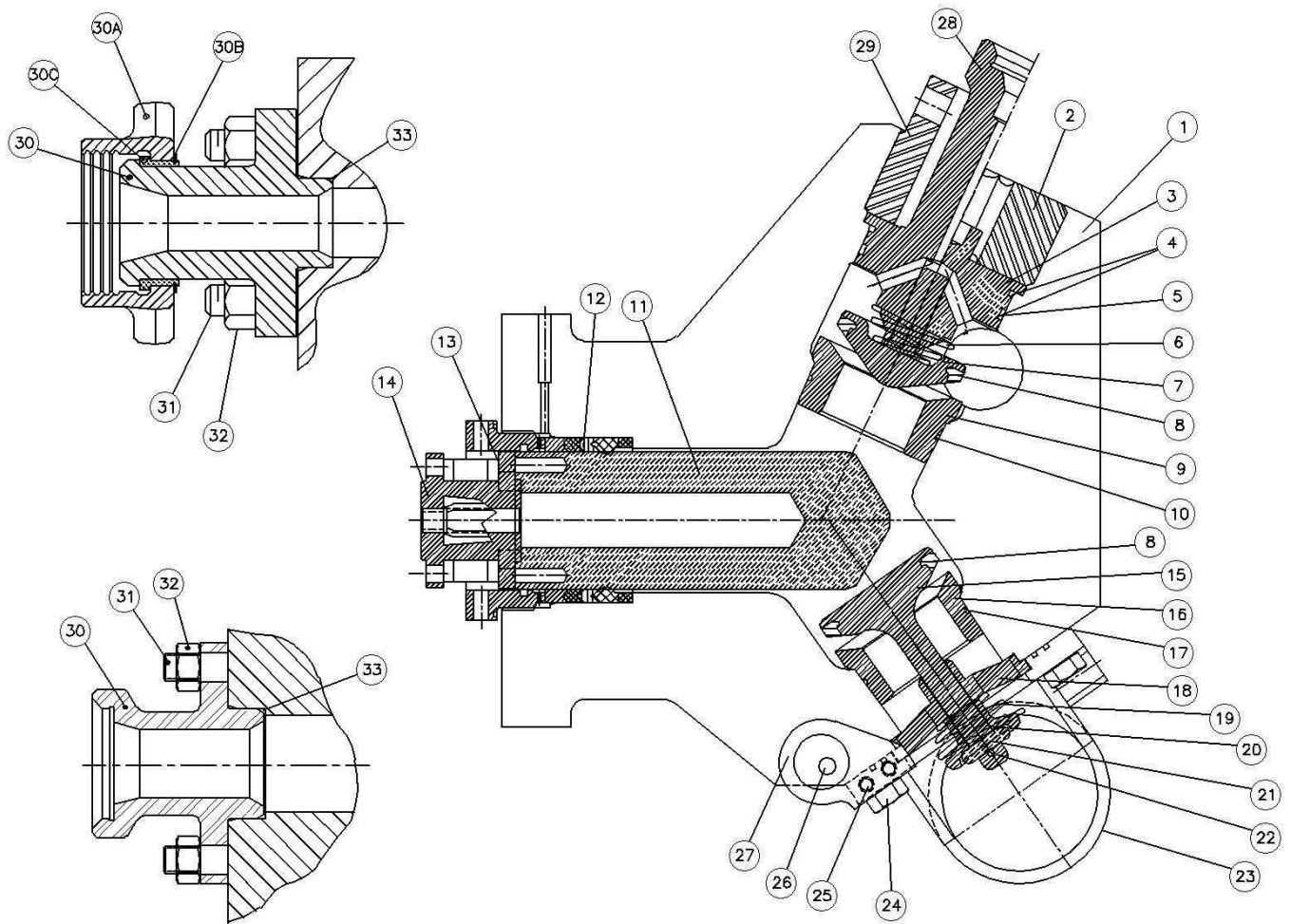
4.0" YWS FLUID CYLINDER ASSEMBLY

Order by Part Number and Description. Reference Numbers are for your convenience only.

Ref No.	Name of Part	Qty.	Part No.
1	FLUID CYLINDER, 4.0" YWS	1	PP1010972
2	RETAINER NUT, PLAIN DISCHARGE	2	PP1002720
3	DISCHARGE VALVE COVER – PLAIN	2	PP1045647
4	SEAL – DISCHARGE VALVE COVER O-RING	3	107986
5	SEAL – DISCHARGE VALVE COVER O-RING BACK-UP	6	25BC731
6	VALVE SPRING – DISCHARGE	3	918PN05
7	DISCHARGE VALVE	3	PP1002954
8	VALVE INSERT (SUCTION & DISCHARGE)	6	PP1002902
9	VALVE SEAT – DISCHARGE	3	PP1045304
10	O-RING – VALVE SEAT	3	151790
11	PLUNGER, 4.0"	3	PP1042097
12	PACKING ASSEMBLY (See Page 15)	3	
13	CAPSCREW	24	75LM187
14	PLUNGER ADAPTER	3	PP1042096
15	SUCTION VALVE	3	PP1002952
16	VALVE SEAT – SUCTION	3	PP1002938
17	O-RING – VALVE SEAT	3	901SH05-240
18	VALVE GUIDE – SUCTION	3	PP1002774
19	VALVE SPRING – SUCTION	3	918PN05
20	KEEPER – SUCTION VALVE	3	PP1002709
21	PIN, SUCTION VALVE KEEPER	3	PP1002706
22	ROLL PIN, SUCTION VALVE KEEPER	3	62R96
23	SUCTION MANIFOLD OPTIONS:		
	6" VICTAULIC CONNECTIONS*	1	PP1002635
	6" Fig. 207 CONNECTIONS*	1	PP1002638
	*O-RING – SUCTION MANIFOLD, SMALL (Not Shown)	3	901SH05-363
	*O-RING – SUCTION MANIFOLD, LARGE (Not Shown)	3	VP1002537
24	CAP SCREW	12	PP1005105
25	CAP SCREW	4	75P76
26	CAPSCREW	2	75P117
27	HINGE, SUCTION MANIFOLD	2	PP1002805
	*SPACER, HINGE (Not Shown)	4	168195
28	DISCHARGE COVER WITH 2" 1502 GAUGE CONNECTION*	1	PP1045648
	*WECO SEAL FOR ABOVE (Not Shown)	1	901SH06-1
29	RETAINER NUT, DISCHARGE GAGE CONNECTION	1	PP1002962
30	DISCHARGE FLANGE OPTIONS:		
	BLIND FLANGE	1	265PN03
	BLIND FLANGE WITH BLEED OFF	1	268PN02
	3" 1502 FEMALE*	1	PP1002959
	*WECO SEAL FOR ABOVE (Not Shown)	1	901SH06-2
	3" 1502 MALE (Require 32A, 32B, and 32C)	1	PP1002960
30A	UNION NUT	1	431200090
30B	RETAINING RING	1	421067000
30C	RETAINING SEGMENTS	3	431042090
31	STUD	12	450VP005-034
32	HEX NUT	12	50B34
33	SEAL – DISCHARGE FLANGE, O-RING SHOULDER	2	107981
34	SEAL – DISCHARGE FLANGE, O-RING GROOVE (Not Shown)	2	107976

4.5" YWS FLUID CYLINDER ASSEMBLY

Order by Part Number and Description. Reference Numbers are for your convenience only.



305CMB810
(Ref Drawing)

4.5" YWS FLUID CYLINDER ASSEMBLY

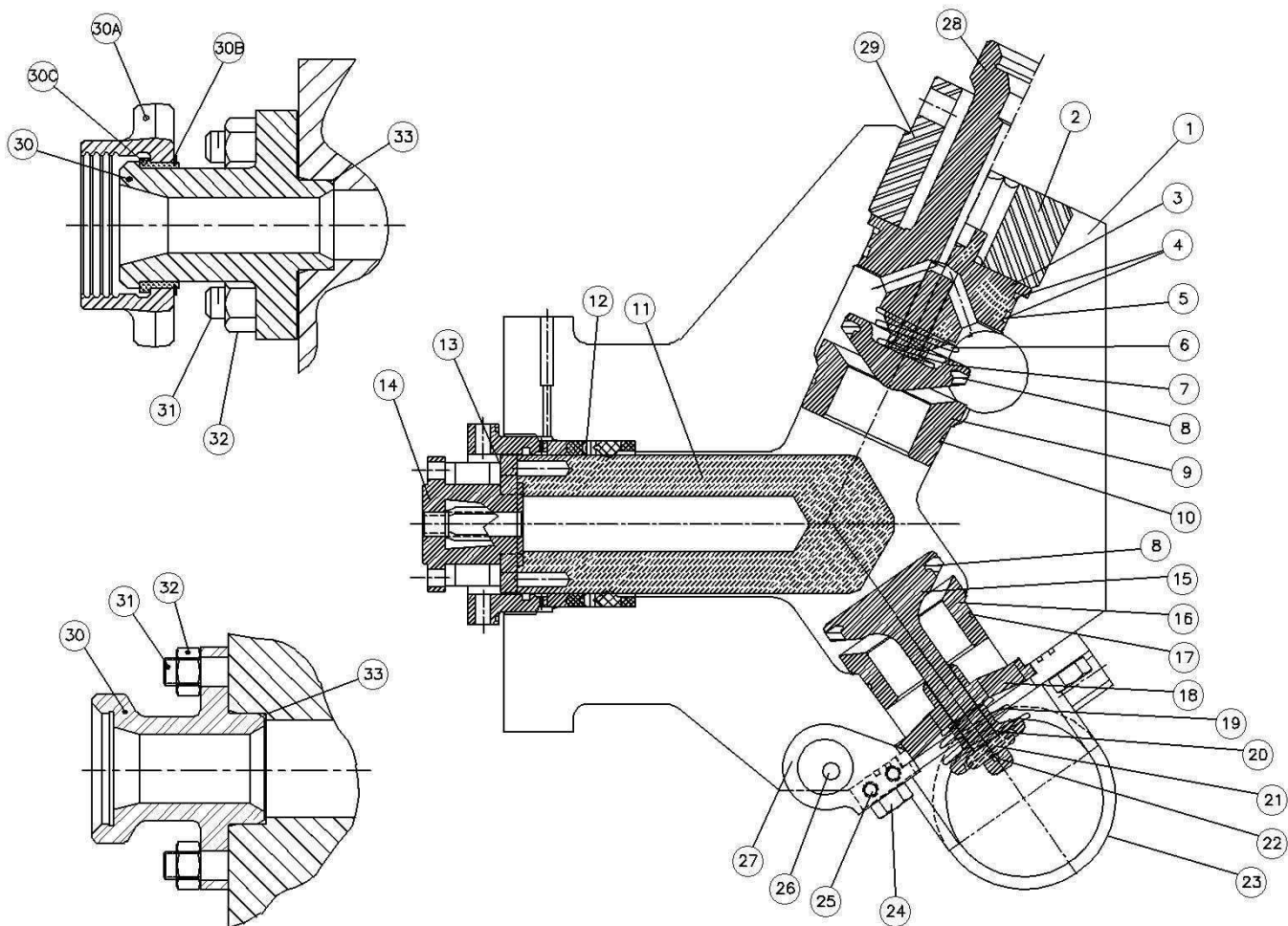
Order by Part Number and Description. Reference Numbers are for your convenience only.

Ref No.	Name of Part	Qty.	Part No.
1	FLUID CYLINDER, 4.5" YWS	1	PP1003356
2	RETAINER NUT, PLAIN DISCHARGE	2	PP1002720
3	DISCHARGE VALVE COVER – PLAIN	2	PP1007451
4	SEAL – DISCHARGE VALVE COVER O-RING	3	162810
5	SEAL – DISCHARGE VALVE COVER O-RING BACK-UP	6	25BC659
6	VALVE SPRING – DISCHARGE	6	918PN05
7	DISCHARGE VALVE	3	PP1002761
8	VALVE INSERT (SUCTION & DISCHARGE)	6	PP1002901
9	VALVE SEAT – DISCHARGE	3	PP1002744
10	O-RING – VALVE SEAT	3	901SH05-249
11	PLUNGER, 4.5"	3	PP1003340
12	PACKING ASSEMBLY (See Page 15)	3	
13	CAPSCREW	24	75LM187
14	PLUNGER ADAPTER	3	PP1003343
15	SUCTION VALVE	3	PP1002757
16	VALVE SEAT – SUCTION	3	PP1002621
17	O-RING – VALVE SEAT	3	161125
18	VALVE GUIDE – SUCTION	3	PP1002774
19	VALVE SPRING – SUCTION	3	918PN05
20	KEEPER – SUCTION VALVE	3	PP1002709
21	PIN, SUCTION VALVE KEEPER	3	PP1002706
22	ROLL PIN, SUCTION VALVE KEEPER	3	62R96
23	SUCTION MANIFOLD OPTIONS:		
	6" VICTAULIC CONNECTIONS*	1	PP1002635
	6" Fig. 207 CONNECTIONS*	1	PP1002638
	*O-RING – SUCTION MANIFOLD, SMALL (Not Shown)	3	901SH05-363
	*O-RING – SUCTION MANIFOLD, LARGE (Not Shown)	3	VP1002537
24	CAP SCREW	12	PP1005105
25	CAP SCREW	4	75P76
26	CAPSCREW	2	75P117
27	HINGE, SUCTION MANIFOLD	2	PP1002805
	*SPACER, HINGE (Not Shown)	4	168195
28	DISCHARGE COVER WITH 2" 1502 GAUGE CONNECTION*	1	PP1007443
	*WECO SEAL FOR ABOVE (Not Shown)	1	901SH06-1
29	RETAINER NUT, DISCHARGE GAGE CONNECTION	1	PP1002962
30	DISCHARGE FLANGE OPTIONS:		
	BLIND FLANGE	1	265PN03
	BLIND FLANGE WITH BLEED OFF	1	268PN02
	3" 1502 FEMALE*	1	PP1002959
	*WECO SEAL FOR ABOVE (Not Shown)	1	901SH06-2
	3" 1502 MALE (Require 32A, 32B, and 32C)	1	PP1002960
30A	UNION NUT	1	431200090
30B	RETAINING RING	1	421067000
30C	RETAINING SEGMENTS	3	431042090
31	STUD	12	450VP005-034
32	HEX NUT	12	50B10
33	SEAL – DISCHARGE FLANGE, O-RING SHOULDER	2	107981
34	SEAL – DISCHARGE FLANGE, O-RING GROOVE (Not Shown)	2	107976

5.0" YWS FLUID CYLINDER ASSEMBLY

Order by Part Number and Description. Reference Numbers are for your convenience only.

Male Discharge Flange Option



Female Discharge Flange Option

305CMB810
(Ref Drawing)

5.0" YWS FLUID CYLINDER ASSEMBLY

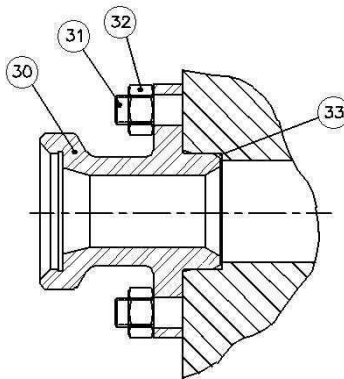
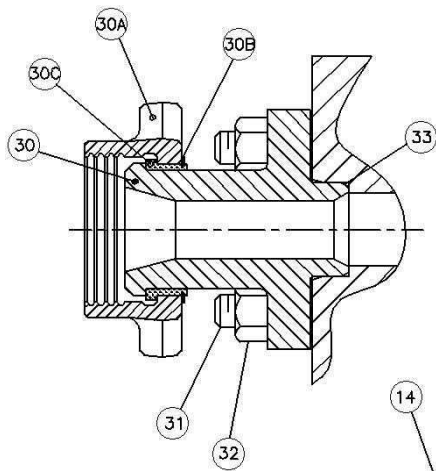
Order by Part Number and Description. Reference Numbers are for your convenience only.

Ref No.	Name of Part	Qty.	Part No.
1	FLUID CYLINDER, 5.0" YWS	1	PP1002614
2	RETAINER NUT, PLAIN DISCHARGE	2	PP1002720
3	DISCHARGE VALVE COVER – PLAIN	2	PP1007451
4	SEAL – DISCHARGE VALVE COVER O-RING	3	162810
5	SEAL – DISCHARGE VALVE COVER O-RING BACK-UP	6	25BC659
6	VALVE SPRING – DISCHARGE	6	918PN05
7	DISCHARGE VALVE	3	PP1002761
8	VALVE INSERT (SUCTION & DISCHARGE)	6	PP1002901
9	VALVE SEAT – DISCHARGE	3	PP1002744
10	O-RING – VALVE SEAT	3	901SH05-249
11	PLUNGER, 5.0"	3	PP1002619
12	PACKING ASSEMBLY (See Page 15)	3	
13	CAPSCREW	24	75LM187
14	PLUNGER ADAPTER	3	PP1002680
15	SUCTION VALVE	3	PP1002757
16	VALVE SEAT – SUCTION	3	PP1002621
17	O-RING – VALVE SEAT	3	161125
18	VALVE GUIDE – SUCTION	3	PP1002774
19	VALVE SPRING – SUCTION	3	918PN05
20	KEEPER – SUCTION VALVE	3	PP1002709
21	PIN, SUCTION VALVE KEEPER	3	PP1002706
22	ROLL PIN, SUCTION VALVE KEEPER	3	62R96
23	SUCTION MANIFOLD OPTIONS:		
	6" VICTAULIC CONNECTIONS*	1	PP1002635
	6" Fig. 207 CONNECTIONS*	1	PP1002638
	*O-RING – SUCTION MANIFOLD, SMALL (Not Shown)	3	901SH05-363
	*O-RING – SUCTION MANIFOLD, LARGE (Not Shown)	3	VP1002537
24	CAP SCREW	12	PP1005105
25	CAP SCREW	4	75P76
26	CAPSCREW	2	75P117
27	HINGE, SUCTION MANIFOLD	2	PP1002805
	*SPACER, HINGE (Not Shown)	4	168195
28	DISCHARGE COVER WITH 2" 1502 GAUGE CONNECTION*	1	PP1007443
	*WECO SEAL FOR ABOVE (Not Shown)	1	901SH06-1
29	RETAINER NUT, DISCHARGE GAGE CONNECTION	1	PP1002962
30	DISCHARGE FLANGE OPTIONS:		
	BLIND FLANGE	1	265PN03
	BLIND FLANGE WITH BLEED OFF	1	268PN02
	3" 1502 FEMALE*	1	PP1002959
	*WECO SEAL FOR ABOVE (Not Shown)	1	901SH06-2
	3" 1502 MALE (Require 32A, 32B, and 32C)	1	PP1002960
30A	UNION NUT	1	431200090
30B	RETAINING RING	1	421067000
30C	RETAINING SEGMENTS	3	431042090
31	STUD	12	450VP005-034
32	HEX NUT	12	50B10
33	SEAL – DISCHARGE FLANGE, O-RING SHOULDER	2	107981
34	SEAL – DISCHARGE FLANGE, O-RING GROOVE (Not Shown)	2	107976

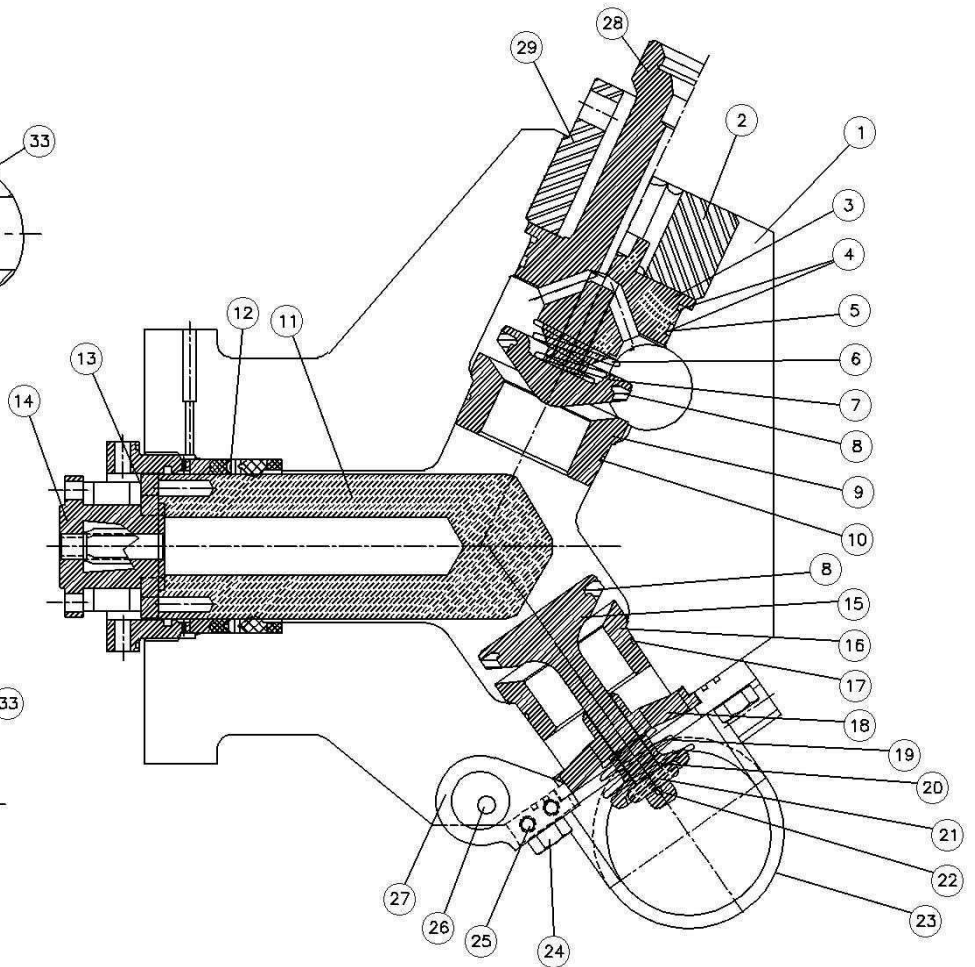
5.5" YWS FLUID CYLINDER ASSEMBLY

Order by Part Number and Description. Reference Numbers are for your convenience only.

Male Discharge Flange Option



Female Discharge Flange Option



305CMB810
(Ref Drawing)

5.5" YWS FLUID CYLINDER ASSEMBLY

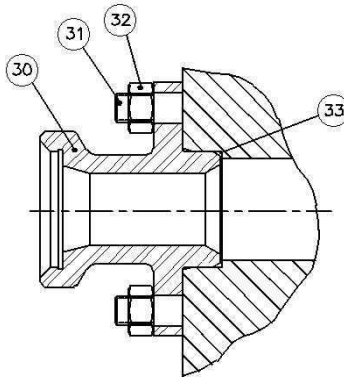
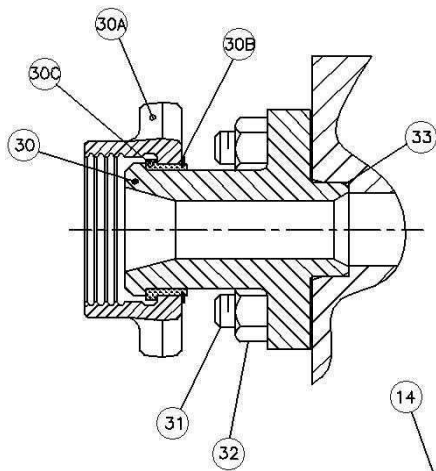
Order by Part Number and Description. Reference Numbers are for your convenience only.

Ref No.	Name of Part	Qty.	Part No.
1	FLUID CYLINDER, 5.5" YWS	1	PP1003364
2	RETAINER NUT, PLAIN DISCHARGE	2	PP1002722
3	DISCHARGE VALVE COVER – PLAIN	2	PP1007454
4	SEAL – DISCHARGE VALVE COVER O-RING	3	VP1003853
5	SEAL – DISCHARGE VALVE COVER O-RING BACK-UP	6	VP1007750
6	VALVE SPRING – DISCHARGE	6	918VP030
7	DISCHARGE VALVE	3	PP1002762
8	VALVE INSERT (SUCTION & DISCHARGE)	6	PP1002903
9	VALVE SEAT – DISCHARGE	3	PP1002622
10	O-RING – VALVE SEAT	3	108513
11	PLUNGER, 5.5"	3	PP1002618
12	PACKING ASSEMBLY (See Page 16)	3	
13	CAPSCREW	24	75LM187
14	PLUNGER ADAPTER	3	PP1003371
15	SUCTION VALVE	3	PP1002758
16	VALVE SEAT – SUCTION	3	PP1002623
17	O-RING – VALVE SEAT	3	137866
18	VALVE GUIDE – SUCTION	3	PP1002776
19	VALVE SPRING – SUCTION	3	918VP030
20	KEEPER – SUCTION VALVE	3	PP1002715
21	PIN, SUCTION VALVE KEEPER	3	PP1002719
22	ROLL PIN, SUCTION VALVE KEEPER	3	PP1005225
23	SUCTION MANIFOLD OPTIONS:		
	6" VICTAULIC CONNECTIONS*	1	PP1002635
	6" Fig. 207 CONNECTIONS*	1	PP1002638
	*O-RING – SUCTION MANIFOLD, SMALL (Not Shown)	3	901SH05-363
	*O-RING – SUCTION MANIFOLD, LARGE (Not Shown)	3	VP1002537
24	CAP SCREW	12	PP1005105
25	CAP SCREW	4	75P76
26	CAPSCREW	2	75P117
27	HINGE, SUCTION MANIFOLD	2	PP1002805
	*SPACER, HINGE (Not Shown)	4	168195
28	DISCHARGE COVER WITH 2" 1502 GAUGE CONNECTION*	1	PP1007783
	*WECO SEAL FOR ABOVE (Not Shown)	1	901SH06-1
29	RETAINER NUT, DISCHARGE GAGE CONNECTION	1	PP1003247
30	DISCHARGE FLANGE OPTIONS:		
	BLIND FLANGE	1	265PN03
	BLIND FLANGE WITH BLEED OFF	1	268PN02
	3" 1502 FEMALE*	1	PP1002959
	*WECO SEAL FOR ABOVE (Not Shown)	1	901SH06-2
	3" 1502 MALE (Require 32A, 32B, and 32C)	1	PP1002960
30A	UNION NUT	1	431200090
30B	RETAINING RING	1	421067000
30C	RETAINING SEGMENTS	3	431042090
31	STUD	12	450VP005-034
32	HEX NUT	12	50B10
33	SEAL – DISCHARGE FLANGE, O-RING SHOULDER	2	107981
34	SEAL – DISCHARGE FLANGE, O-RING GROOVE (Not Shown)	2	107976

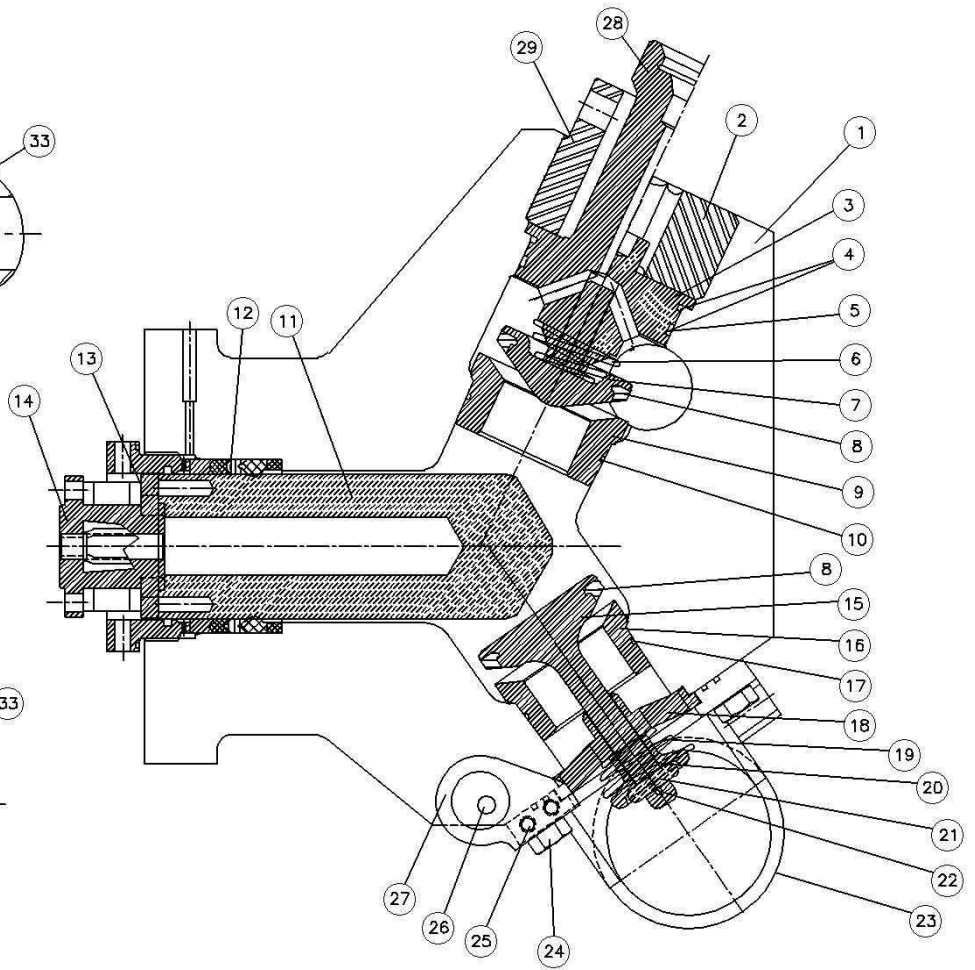
6.0" YWS FLUID CYLINDER ASSEMBLY

Order by Part Number and Description. Reference Numbers are for your convenience only.

Male Discharge Flange Option



Female Discharge Flange Option



305CMB810
(Ref Drawing)

6.0" YWS FLUID CYLINDER ASSEMBLY

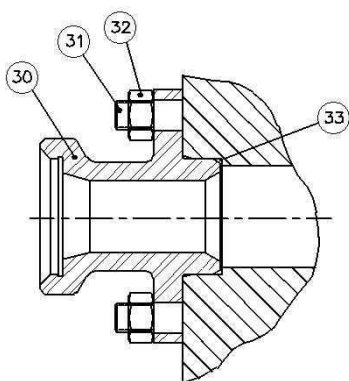
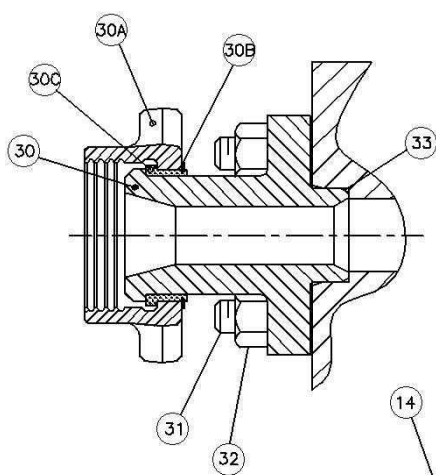
Order by Part Number and Description. Reference Numbers are for your convenience only.

Ref No.	Name of Part	Qty.	Part No.
1	FLUID CYLINDER, 6.0" YWS	1	PP1003368
2	RETAINER NUT, PLAIN DISCHARGE	2	PP1002722
3	DISCHARGE VALVE COVER – PLAIN	2	PP1007454
4	SEAL – DISCHARGE VALVE COVER O-RING	3	VP1003853
5	SEAL – DISCHARGE VALVE COVER O-RING BACK-UP	6	VP1007750
6	VALVE SPRING – DISCHARGE	6	918VP030
7	DISCHARGE VALVE	3	PP1002762
8	VALVE INSERT (SUCTION & DISCHARGE)	6	PP1002903
9	VALVE SEAT – DISCHARGE	3	PP1002622
10	O-RING – VALVE SEAT	3	108513
11	PLUNGER, 6.0"	3	PP1005280
12	PACKING ASSEMBLY (See Page 16)	3	
13	CAPSCREW	24	75LM187
14	PLUNGER ADAPTER	3	PP1003371
15	SUCTION VALVE	3	PP1002758
16	VALVE SEAT – SUCTION	3	PP1002623
17	O-RING – VALVE SEAT	3	137866
18	VALVE GUIDE – SUCTION	3	PP1002776
19	VALVE SPRING – SUCTION	3	918VP030
20	KEEPER – SUCTION VALVE	3	PP1002715
21	PIN, SUCTION VALVE KEEPER	3	PP1002719
22	ROLL PIN, SUCTION VALVE KEEPER	3	PP1005225
23	SUCTION MANIFOLD OPTIONS:		
	6" VICTAULIC CONNECTIONS*	1	PP1002635
	6" Fig. 207 CONNECTIONS*	1	PP1002638
	*O-RING – SUCTION MANIFOLD, SMALL (Not Shown)	3	901SH05-363
	*O-RING – SUCTION MANIFOLD, LARGE (Not Shown)	3	VP1002537
24	CAP SCREW	12	PP1005105
25	CAP SCREW	4	75P76
26	CAPSCREW	2	75P117
27	HINGE, SUCTION MANIFOLD	2	PP1002805
	*SPACER, HINGE (Not Shown)	4	168195
28	DISCHARGE COVER WITH 2" 1502 GAUGE CONNECTION*	1	PP1007783
	*WECO SEAL FOR ABOVE (Not Shown)	1	901SH06-1
29	RETAINER NUT, DISCHARGE GAGE CONNECTION	1	PP1003247
30	DISCHARGE FLANGE OPTIONS:		
	BLIND FLANGE	1	265PN03
	BLIND FLANGE WITH BLEED OFF	1	268PN02
	3" 1502 FEMALE*	1	PP1002959
	*WECO SEAL FOR ABOVE (Not Shown)	1	901SH06-2
	3" 1502 MALE (Require 32A, 32B, and 32C)	1	PP1002960
30A	UNION NUT	1	431200090
30B	RETAINING RING	1	421067000
30C	RETAINING SEGMENTS	3	431042090
31	STUD	12	450VP005-034
32	HEX NUT	12	50B10
33	SEAL – DISCHARGE FLANGE, O-RING SHOULDER	2	107981
34	SEAL – DISCHARGE FLANGE, O-RING GROOVE (Not Shown)	2	107976

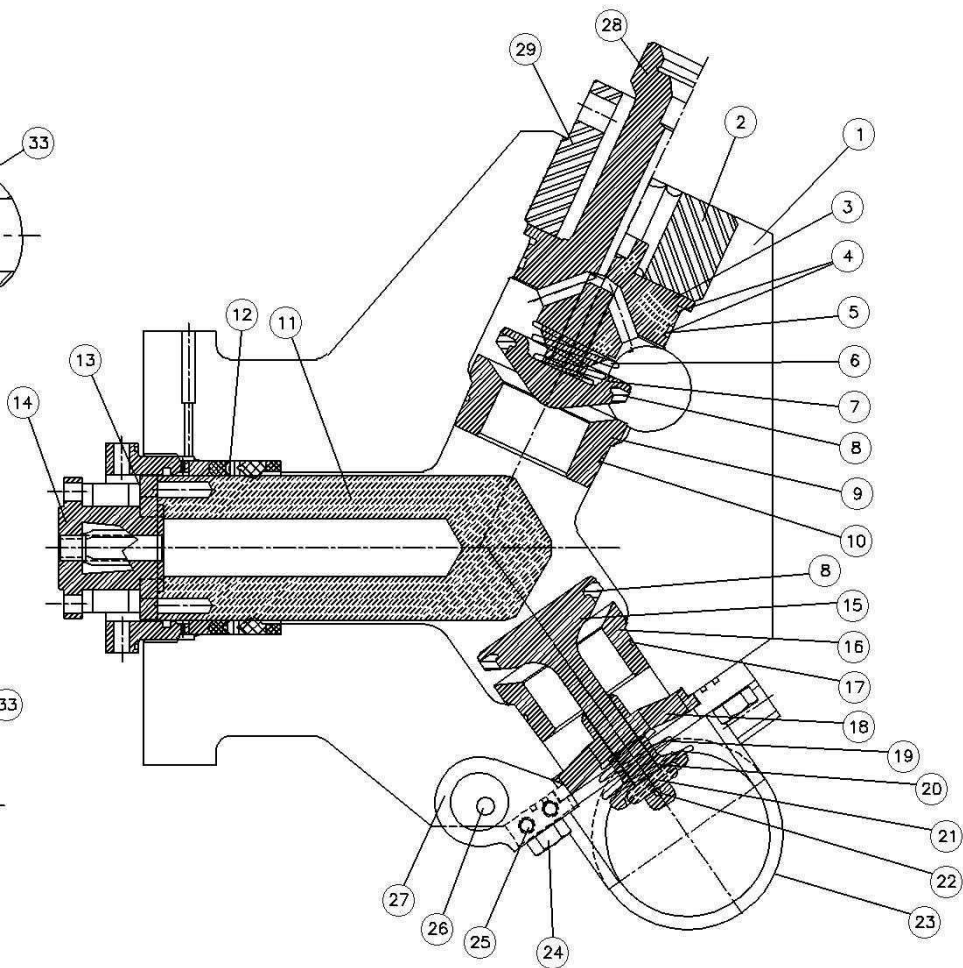
6.5" YWS FLUID CYLINDER ASSEMBLY

Order by Part Number and Description. Reference Numbers are for your convenience only.

Male Discharge Flange Option



Female Discharge Flange Option



305CMB810
(Ref Drawing)

6.5" YWS FLUID CYLINDER ASSEMBLY

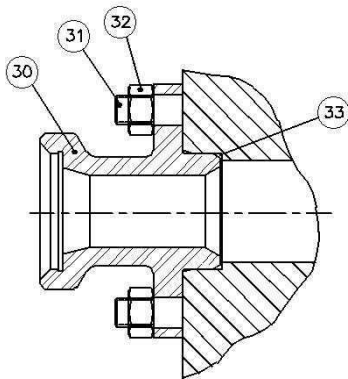
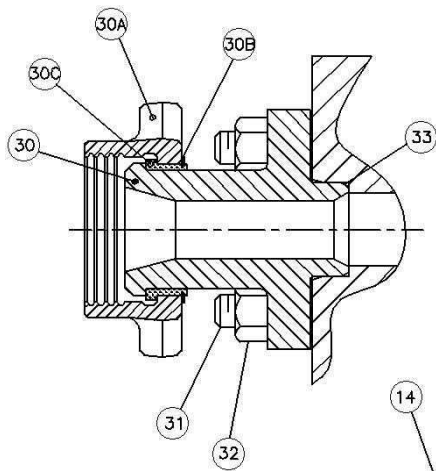
Order by Part Number and Description. Reference Numbers are for your convenience only.

Ref No.	Name of Part	Qty.	Part No.
1	FLUID CYLINDER, 6.5" YWS	1	PP1005293
2	RETAINER NUT, PLAIN DISCHARGE	2	PP1002729
3	DISCHARGE VALVE COVER – PLAIN	2	PP1007455
4	SEAL – DISCHARGE VALVE COVER O-RING	3	901SH05-440
5	SEAL – DISCHARGE VALVE COVER O-RING BACK-UP	6	25BC664
6	VALVE SPRING – DISCHARGE	6	918VP033
7	DISCHARGE VALVE	3	PP1002859
8	VALVE INSERT (SUCTION & DISCHARGE)	6	PP1002904
9	VALVE SEAT – DISCHARGE	3	PP1002625
10	O-RING – VALVE SEAT	3	PP1002777
11	PLUNGER, 6.5"	3	PP1002618
12	PACKING ASSEMBLY (See Page 16)	3	
13	CAPSCREW	24	75LM187
14	PLUNGER ADAPTER	3	PP1005287
15	SUCTION VALVE	3	PP1002759
16	VALVE SEAT – SUCTION	3	PP1002627
17	O-RING – VALVE SEAT	3	108513
18	VALVE GUIDE – SUCTION	3	PP1002777
19	VALVE SPRING – SUCTION	3	918VP033
20	KEEPER – SUCTION VALVE	3	PP1002717
21	PIN, SUCTION VALVE KEEPER	3	PP1002719
22	ROLL PIN, SUCTION VALVE KEEPER	3	PP1005225
23	SUCTION MANIFOLD OPTIONS:		
	6" VICTAULIC CONNECTIONS*	1	PP1002639
	6" Fig. 207 CONNECTIONS*	1	PP1002637
	*O-RING – SUCTION MANIFOLD, LARGE (Not Shown)	3	VP1002536
24	CAP SCREW	12	PP1005105
25	CAP SCREW	4	75P76
26	CAPSCREW	2	75P117
27	HINGE, SUCTION MANIFOLD	2	PP1002805
	*SPACER, HINGE (Not Shown)	4	168195
28	DISCHARGE COVER WITH 2" 1502 GAUGE CONNECTION*	1	PP1007785
	*WECO SEAL FOR ABOVE (Not Shown)	1	901SH06-1
29	RETAINER NUT, DISCHARGE GAGE CONNECTION	1	PP1002730
30	DISCHARGE FLANGE OPTIONS:		
	BLIND FLANGE	1	265PN03
	BLIND FLANGE WITH BLEED OFF	1	268PN02
	3" 1502 FEMALE*	1	PP1002959
	*WECO SEAL FOR ABOVE (Not Shown)	1	901SH06-2
	3" 1502 MALE (Require 32A, 32B, and 32C)	1	PP1002960
30A	UNION NUT	1	431200090
30B	RETAINING RING	1	421067000
30C	RETAINING SEGMENTS	3	431042090
31	STUD	12	450VP005-034
32	HEX NUT	12	50B10
33	SEAL – DISCHARGE FLANGE, O-RING SHOULDER	2	107981
34	SEAL – DISCHARGE FLANGE, O-RING GROOVE (Not Shown)	2	107976

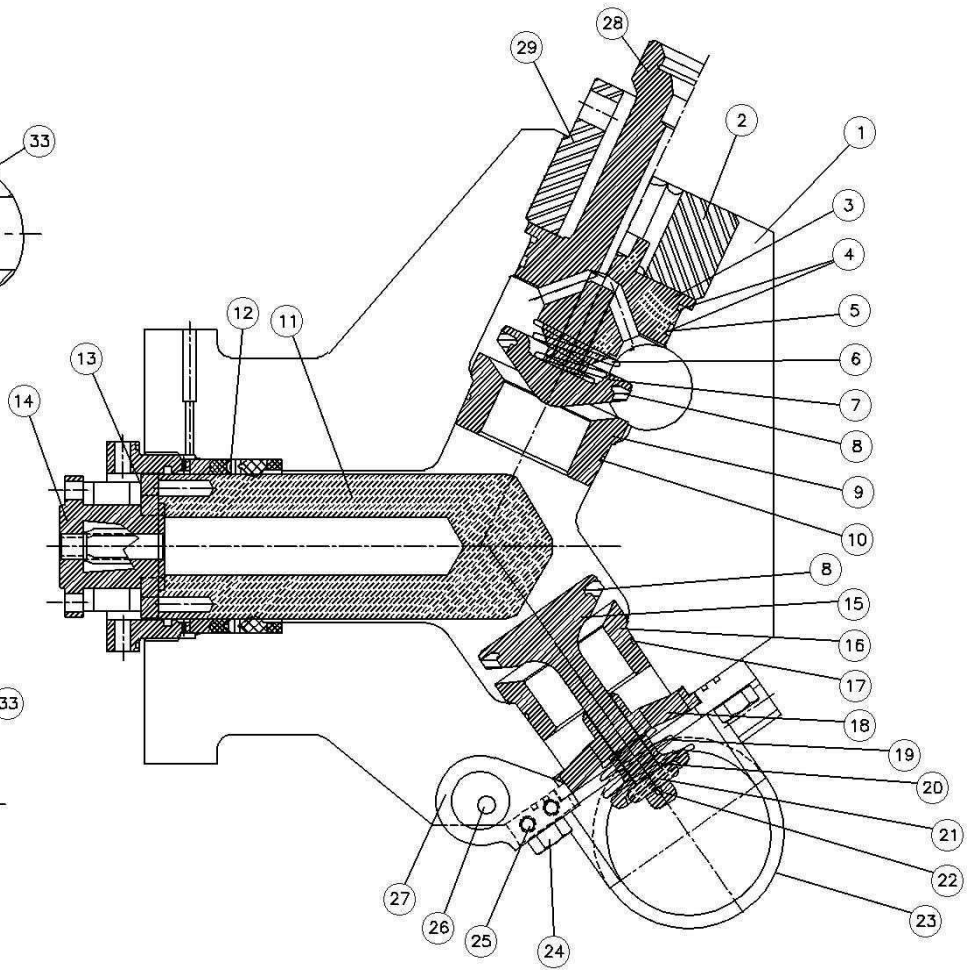
6.75" YWS FLUID CYLINDER ASSEMBLY

Order by Part Number and Description. Reference Numbers are for your convenience only.

Male Discharge Flange Option



Female Discharge Flange Option



305CMB810
(Ref Drawing)

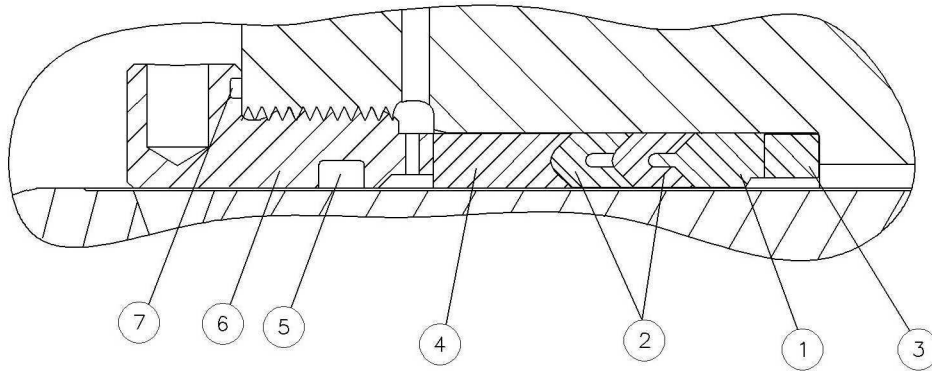
6.75" YWS FLUID CYLINDER ASSEMBLY

Order by Part Number and Description. Reference Numbers are for your convenience only.

Ref No.	Name of Part	Qty.	Part No.
1	FLUID CYLINDER, 6.75" YWS	1	PP1007493
2	RETAINER NUT, PLAIN DISCHARGE	2	PP1002729
3	DISCHARGE VALVE COVER – PLAIN	2	PP1007455
4	SEAL – DISCHARGE VALVE COVER O-RING	3	901SH05-440
5	SEAL – DISCHARGE VALVE COVER O-RING BACK-UP	6	25BC664
6	VALVE SPRING – DISCHARGE	6	918VP033
7	DISCHARGE VALVE	3	PP1002859
8	VALVE INSERT (SUCTION & DISCHARGE)	6	PP1002904
9	VALVE SEAT – DISCHARGE	3	PP1002625
10	O-RING – VALVE SEAT	3	PP1002777
11	PLUNGER, 6.75"	3	PP1007494
12	PACKING ASSEMBLY (See Page 17)	3	
13	CAPSCREW	24	75LM187
14	PLUNGER ADAPTER	3	PP1005287
15	SUCTION VALVE	3	PP1002759
16	VALVE SEAT – SUCTION	3	PP1002627
17	O-RING – VALVE SEAT	3	108513
18	VALVE GUIDE – SUCTION	3	PP1002777
19	VALVE SPRING – SUCTION	3	918VP033
20	KEEPER – SUCTION VALVE	3	PP1002717
21	PIN, SUCTION VALVE KEEPER	3	PP1002719
22	ROLL PIN, SUCTION VALVE KEEPER	3	PP1005225
23	SUCTION MANIFOLD OPTIONS:		
	6" VICTAULIC CONNECTIONS*	1	PP1002639
	6" Fig. 207 CONNECTIONS*	1	PP1002637
	*O-RING – SUCTION MANIFOLD, LARGE (Not Shown)	3	VP1002536
24	CAP SCREW	12	PP1005105
25	CAP SCREW	4	75P76
26	CAPSCREW	2	75P117
27	HINGE, SUCTION MANIFOLD	2	PP1002805
	*SPACER, HINGE (Not Shown)	4	168195
28	DISCHARGE COVER WITH 2" 1502 GAUGE CONNECTION*	1	PP1007785
	*WECO SEAL FOR ABOVE (Not Shown)	1	901SH06-1
29	RETAINER NUT, DISCHARGE GAGE CONNECTION	1	PP1002730
30	DISCHARGE FLANGE OPTIONS:		
	BLIND FLANGE	1	265PN03
	BLIND FLANGE WITH BLEED OFF	1	268PN02
	3" 1502 FEMALE*	1	PP1002959
	*WECO SEAL FOR ABOVE (Not Shown)	1	901SH06-2
	3" 1502 MALE (Require 32A, 32B, and 32C)	1	PP1002960
30A	UNION NUT	1	431200090
30B	RETAINING RING	1	421067000
30C	RETAINING SEGMENTS	3	431042090
31	STUD	12	450VP005-034
32	HEX NUT	12	50B10
33	SEAL – DISCHARGE FLANGE, O-RING SHOULDER	2	107981
34	SEAL – DISCHARGE FLANGE, O-RING GROOVE (Not Shown)	2	107976

RSL PACKING ASSEMBLY FOR YWS CYLINDER

Order by Part Number and Description. Reference Numbers are for your convenience only.



4.0" RSL PACKING ASSEMBLY

Ref No.	Name of Part	Qty.	Part No.
1	HEADER RING, 4.0"	1	901VP014-005
2	PACKING RING	2	901VP002-005
3	SPACER	1	203WPD144
4	FEMALE ADAPTER	1	PP1045928
5	WIPER SEAL	1	60AM84
6	PACKING NUT	1	301THD008
7	O-RING	1	901SH05-256

4.5" RSL PACKING ASSEMBLY

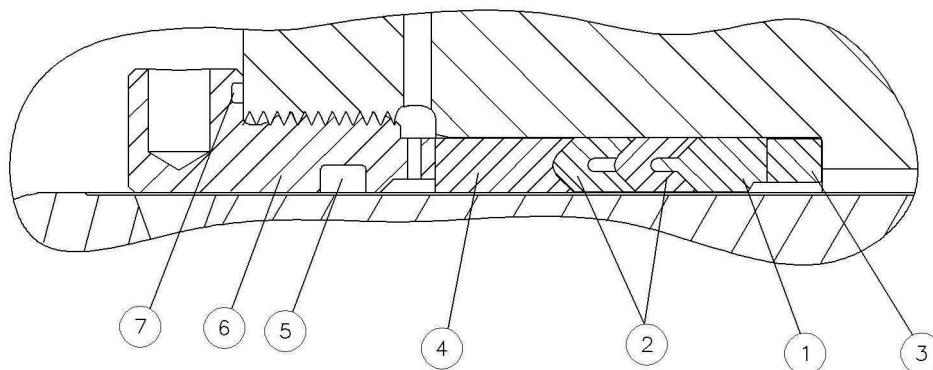
Ref No.	Name of Part	Qty.	Part No.
1	HEADER RING, 4.5"	1	901VP014-014
2	PACKING RING	2	901VP002-014
3	SPACER	1	595737000
4	FEMALE ADAPTER	1	PP1003345
5	WIPER SEAL	1	60AM57
6	PACKING NUT	1	182PN02
7	O-RING	1	108515

5.0" RSL PACKING ASSEMBLY

Ref No.	Name of Part	Qty.	Part No.
1	HEADER RING, 5.0"	1	901VP014-009
2	PACKING RING	2	901VP002-009
3	SPACER	1	PP1002678
4	FEMALE ADAPTER	1	PP1002679
5	WIPER SEAL	1	60AM58
6	PACKING NUT	1	PP1002608
7	O-RING	1	167661

RSL PACKING ASSEMBLY FOR YWS CYLINDER

Order by Part Number and Description. Reference Numbers are for your convenience only.



5.5" RSL PACKING ASSEMBLY

Ref No.	Name of Part	Qty.	Part No.
1	HEADER RING, 5.5"	1	901VP014-008
2	PACKING RING	2	901VP002-008
3	SPACER	1	PP1002883
4	FEMALE ADAPTER	1	PP1004581
5	WIPER SEAL	1	60AM60
6	PACKING NUT	1	PP1002958
7	O-RING	1	901SH05-263

6.0" RSL PACKING ASSEMBLY

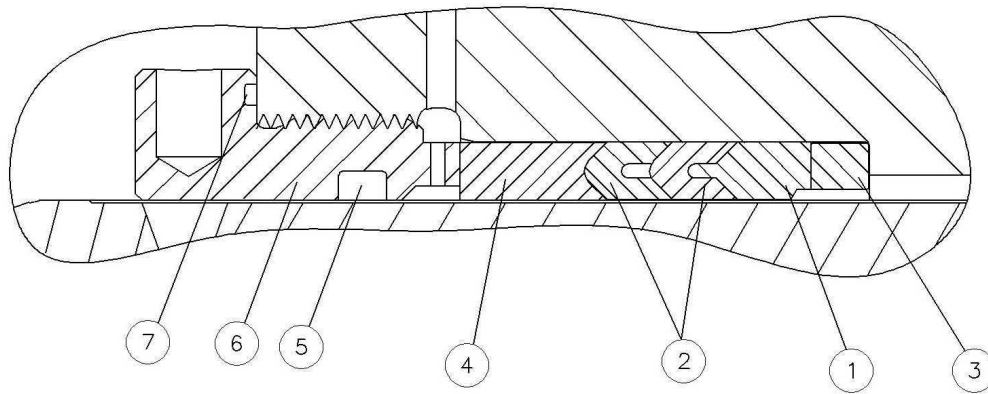
Ref No.	Name of Part	Qty.	Part No.
1	HEADER RING, 6.0"	1	901VP014-007
2	PACKING RING	2	901VP002-007
3	SPACER	1	PP1002886
4	FEMALE ADAPTER	1	PP1004582
5	WIPER SEAL	1	60AM62
6	PACKING NUT	1	182PN17
7	O-RING	1	108516

6.5" RSL PACKING ASSEMBLY

Ref No.	Name of Part	Qty.	Part No.
1	HEADER RING, 6.5"	1	901VP014-015
2	PACKING RING	2	901VP002-015
3	SPACER	1	PP1002887
4	FEMALE ADAPTER	1	PP1004583
5	WIPER SEAL	1	60AM63
6	PACKING NUT	1	PP1002609
7	O-RING	1	108517

RSL PACKING ASSEMBLY FOR YWS CYLINDER

Order by Part Number and Description. Reference Numbers are for your convenience only.



6.75" RSL PACKING ASSEMBLY

Ref No.	Name of Part	Qty.	Part No.
1	HEADER RING, 6.75"	1	901VP014-011
2	PACKING RING	2	901VP002-011
3	SPACER	1	PP1003363
4	FEMALE ADAPTER	1	PP1007495
5	WIPER SEAL	1	60AM64
6	PACKING NUT	1	182PN19
7	O-RING	1	136847

YWS FLUID END SERVICE TOOLS

Ref No.	Name of Part	Qty.	Part No.
A	PACKING NUT WRENCH	1	PP1002955
B	HEX WRENCH (SELECT FROM 2 SIZE OPTIONS BELOW)		
	4.5"-5.0" FLUID END HEX WRENCH (2" HEX)	1	P-A-09
	5.5"-7.0" FLUID END HEX WRENCH (3" HEX)	1	342-A-89
C	SLIDE HAMMER WRENCH	1	PP1002941
D	MANIFOLD LIFT BAR	1	PP1004776
E	GAUGE CONNECTION RETAINER WRENCH	1	PP1002787
F	SUCTION VALVE SPRING TOOL	1	PP1002643
G	SEAT PULLER TOOL KIT (SELECT FROM 3 SIZE OPTIONS BELOW)		
	4.5" – 5.0" SEAT PULLER TOOL KIT (*INCLUDES THE FOLLOWING 4 ITEMS)	1	590AD016
	* SEAT PULLER ASSEMBLY	1	OPA90683
	* PULLER HEAD ASSEMBLY	1	590AD011
	* NUT	1	50B18
	* STUD	1	450PN022
	5.5" – 6.0" SEAT PULLER TOOL KIT (*INCLUDES THE FOLLOWING 4 ITEMS)	1	404THD6031
	* SEAT PULLER ASSEMBLY	1	OPA90683
	* PULLER HEAD ASSEMBLY	1	590AD012
	* NUT	1	50B18
	* STUD	1	450PN022
	6.5" – 7.0" SEAT PULLER TOOL KIT (*INCLUDES THE FOLLOWING 4 ITEMS)	1	PP1005578
	* SEAT PULLER ASSEMBLY	1	OPA90683
	* PULLER HEAD ASSEMBLY	1	PP1005577
	* NUT	1	50B18
	* STUD	1	450PN022
H	YWS SEAT REMOVAL PLATE	1	PP1003334
I	SEAT REMOVAL PLUG (SELECT FROM 3 SIZE OPTIONS BELOW)		
	4.5" – 5.0" SEAT REMOVAL PLUG	1	PP1004548
	5.5" – 6.0" SEAT REMOVAL PLUG	1	PP1004549
	6.5" – 7.0" SEAT REMOVAL PLUG	1	PP1004550



北京

信德迈科技(北京)有限公司CNMEC Technology
北京朝阳区胜古中路2号金基业大厦201室

邮编：100029

电话：010-8428 2935 13910962635

传真：010-8428 8762

主页：[//www.cnmec.biz](http://www.cnmec.biz)

电子邮件：sales@cnmec.biz

西安

西安嘉岳自动化技术有限公司Garye Automation
地址：西安经开区凤城二路天地时代广场B座23层22312室

邮编：710016

电话：029 - 8610 8648 15319759129

传真：029 - 8610 6806

主页：<http://www.garye.cn>

电子邮件：sales@garye.cn